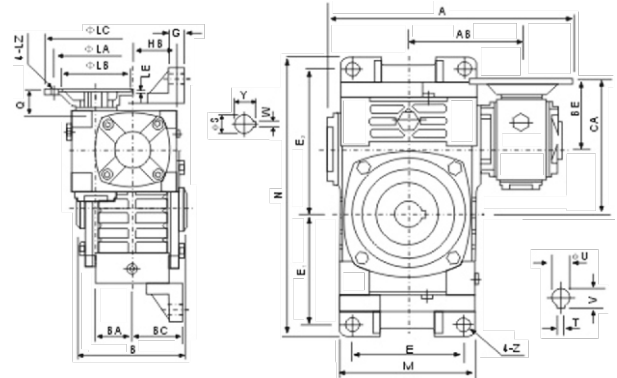
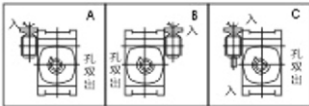


WPWEDKO

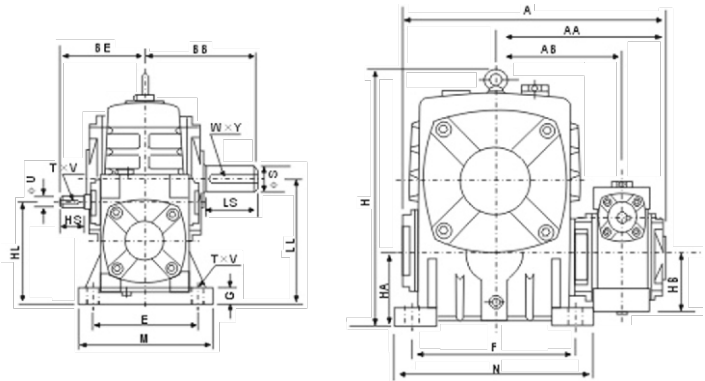


SHAFT DIRECTION

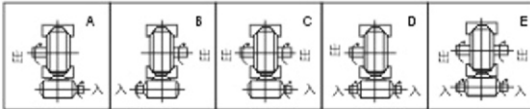


size	input (kW)	ratio	A	AB	B	BA	BC	BE	HB	CA	M	N	E	E ₁	E ₂	G	Z	flange					input hole			output shaft		weight (kg)
																		LA	LB	LC	LE	LZ	Q	U	T x V	S	W x Y	
40-70	0.12	1/200	287	126	132	40	65	75	50	145	152	305	120	120	155	20	15	115	95	140	4	M8	31	11	4 x 12.8	30	8 x 33.3	20
50-80	0.18		314	144	150	50	70	83	65	163	174	350	140	140	180	20	15	115	95	140	4	M8	31	11	4 x 12.8	35	10 x 38.3	31
60-100	0.37	1/300	387	175	174	60	90	91	75	191	224	410	190	165	215	22	15	130	110	160	4	M8	33	14	5 x 16.3	40	12 x 43.3	48
70-120	0.37		425	193	180	70	100	109	90	229	264	494	220	195	255	25	18	130	110	160	4	M8	40	14	5 x 16.3	45	14 x 48.8	71
	0.75	445					111		231								165	130	200	4	M10	42	19	6 x 21.8				
80-135	0.75	1/400	499	226	214	80	110	125	105	260	304	559	260	230	285	30	18	165	130	200	4.5	M10	48	19	6 x 21.8	60	18 x 64.4	107
	1.5	1/500																			52	24	8 x 27.3					
100-155	1.5	1/600	570	269	256	100	140	148	130	303	345	605	290	250	305	35	21	165	130	200	4.5	M10	52	24	8 x 27.3	70	20 x 74.9	166
120-175	2.2	1/800	631	278	282	120	150	181	155	356	374	675	320	273	348	40	21	215	180	250	5	M12	63	28	8 x 31.3	80	22 x 85.4	211
	3.0																											
135-200	3.0	1/900	680	318	324	135	175	202	185	402	424	749	370	305	390	40	24	215	180	250	5	M12	63	28	8 x 31.3	85	22 x 90.4	307
	4.0																											
155-250	5.5		815	380	400	155	200	247	203	497	510	920	440	375	475	45	28	265	230	300	5	M12	83	38	10 x 41.3	110	28 x 116.4	484

WPEA



SHAFT DIRECTION



size	ratio	A	AA	AB	BB	BE	HL	LL	H	HA	HB	M	N	E	F	G	Z	input shaft			output shaft			weight (kg)
																		HS	U	T x V	LS	S	W x Y	
40-70	1/200	262	171	126	131	89	110	140	236	70	50	150	190	115	150	20	15	25	12	4 x 2.5	60	28	8 x 4	20
50-80		297	197	144	142	107	130	160	268	80	65	170	220	135	180	20	15	30	12	4 x 2.5	65	32	10 x 5	27
60-100	1/300	363	231	175	169	122	160	200	336	100	75	190	270	155	220	25	15	40	15	5 x 3	75	38	10 x 5	44
70-120	1/400	408	256	193	190	140	190	240	430	120	90	230	320	180	260	30	18	40	18	6 x 3.5	85	45	14 x 5.5	73
80-135	1/500	471	298	226	210	160	215	270	480	135	105	250	350	200	290	30	18	50	22	6 x 3.5	95	55	16 x 6	101
80-147	1/600	476	301	229	212	160	203	270	501	123	105	250	350	200	280	32	18	50	22	6 x 3.5	95	55	16 x 6	112
100-155	1/800	555	354	269	252	190	235	290	531	135	130	275	390	220	320	35	21	50	25	8 x 4	110	60	18 x 7	144
120-175	1/900	598	379	287	262	229	280	335	600	160	155	310	430	250	350	40	21	65	30	8 x 4	110	65	18 x 7	201
135-200		662	425	318	305	260	210	375	666	175	185	360	480	290	390	40	24	75	35	10 x 5	125	70	20 x 7.5	293
155-250		795	510	380	360	302	355	450	800	200	203	460	560	380	480	45	28	85	40	12 x 5	155	90	25 x 9	462