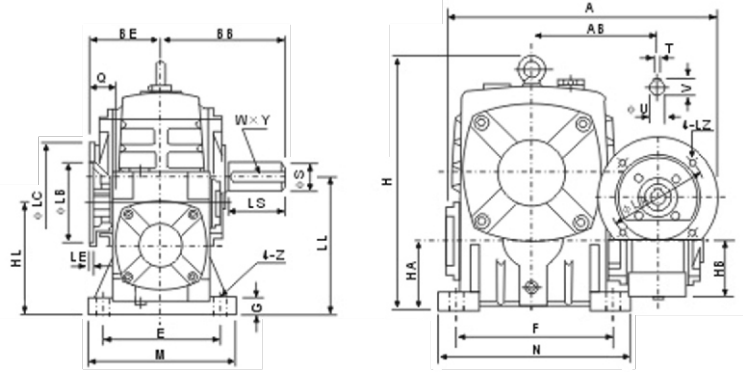
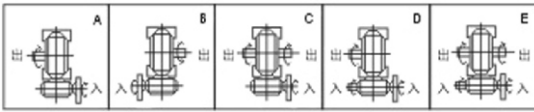


WPEDA



SHAFT DIRECTION

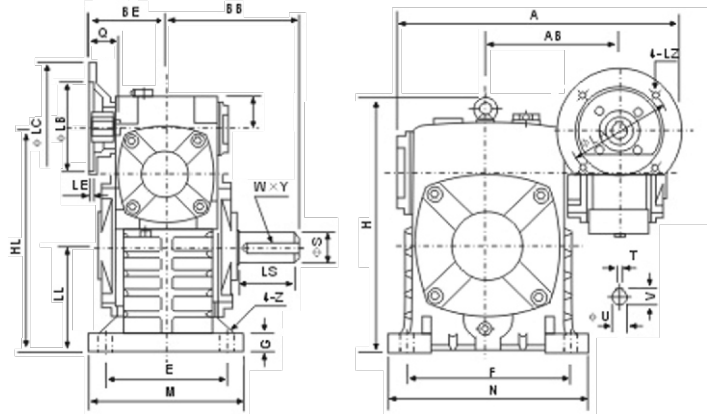
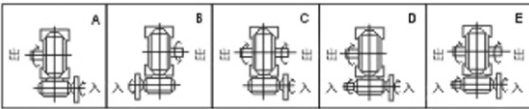


size	input (kW)	ratio	A	AB	BB	BE	HL	LL	H	HA	HB	M	N	E	F	G	Z	flange					input hole			output shaft			weight (kg)
																		LA	LB	LC	LE	LZ	Q	U	T x V	LS	S	W x Y	
40-70	0.12	1/200 1/300 1/400 1/500 1/600 1/800 1/900	287	126	131	75	110	140	236	70	50	150	190	115	150	20	15	115	95	140	4	M8	31	11	4 x 12.8	60	28	8 x 4	19
50-80	0.18		314	144	142	83	130	160	268	80	65	170	220	135	180	20	15	115	95	140	4	M8	31	11	4 x 12.8	65	32	10 x 5	27
60-100	0.37		387	175	169	91	160	200	336	100	75	190	270	155	220	25	15	130	110	160	4	M8	33	14	5 x 16.3	75	38	10 x 5	45
70-120	0.37		425	193	190	109	190	240	430	120	90	230	320	180	260	30	18	130	110	160	4	M8	40	14	5 x 16.3	85	45	14 x 5.5	75
	0.75		111			M10																							
80-135	0.75		445	226	210	125	215	270	480	135	105	250	350	200	290	30	18	165	130	200	4.5	M10	48	19	6 x 21.8	95	55	16 x 6	103
	1.5		52																										
80-147	0.75		504	229	212	125	203	270	501	123	105	250	350	200	280	32	18	165	130	200	4.5	M10	48	19	6 x 21.8	95	55	16 x 6	114
	1.5		52																										
100-155	1.5		570	269	252	148	235	290	531	135	130	275	390	220	320	35	21	165	130	200	4.5	M10	52	24	8 x 27.3	110	60	18 x 7	147
120-175	2.2		631	278	262	181	280	335	600	160	155	310	430	250	350	40	21	215	180	250	5	M12	63	28	8 x 31.3	110	65	18 x 7	204
	3.0																												
135-200	3.0	680	318	305	202	310	375	666	175	185	360	480	290	390	40	24	215	180	250	5	M12	63	28	8 x 31.3	125	70	20 x 7.5	298	
	4.0																												
155-250	5.5	815	380	360	247	355	450	800	200	203	460	560	380	480	45	28	265	230	300	5	M12	83	38	10 x 41.3	155	90	25 x 9	470	

WPEDS



SHAFT DIRECTION



size	input (kW)	ratio	A	AB	BB	BE	HL	LL	H	M	N	E	F	G	Z	flange					input hole			output shaft			weight (kg)
																LA	LB	LC	LE	LZ	Q	U	T x V	LS	S	W x Y	
40-70	0.12	1/200 1/300 1/400 1/500 1/600 1/800 1/900	287	126	131	75	215	105	238	150	190	115	150	20	15	115	95	140	4	M8	31	11	4 x 12.8	60	28	8 x 4	19
50-80	0.18		314	144	142	83	250	120	273	170	220	135	180	20	15	115	95	140	4	M8	31	11	4 x 12.8	65	32	10 x 5	27
60-100	0.37		387	175	169	91	310	150	334	190	270	155	220	25	15	130	110	160	4	M8	33	14	5 x 16.3	75	38	10 x 5	45
70-120	0.37		425	193	190	109	370	180	423	230	320	180	260	30	18	130	110	160	4	M8	40	14	5 x 16.3	85	45	14 x 5.5	75
	0.75		111			M10																					
80-135	0.75		445	226	210	125	430	215	482	250	350	200	290	30	18	165	130	200	4.5	M10	48	19	6 x 21.8	95	55	16 x 6	103
	1.5		52																								
80-147	0.75		504	229	212	125	430	203	495	250	350	200	280	32	18	165	130	200	4.5	M10	48	19	6 x 21.8	95	55	16 x 6	114
	1.5		52																								
100-155	1.5		570	269	252	148	490	235	541	275	390	220	320	35	21	165	130	200	4.5	M10	52	24	8 x 27.3	110	60	18 x 7	147
120-175	2.2		631	287	262	181	555	260	600	310	430	250	350	40	21	215	180	250	5	M12	63	28	8 x 31.3	110	65	18 x 7	204
	3.0																										
135-200	3.0	680	318	305	202	625	290	677	360	480	290	390	40	24	215	180	250	5	M12	63	28	8 x 31.3	125	70	20 x 7.5	298	
	4.0																										
155-250	5.5	815	380	360	247	755	350	824	460	560	380	480	45	28	265	230	300	5	M12	83	38	10 x 41.3	155	90	25 x 9	470	