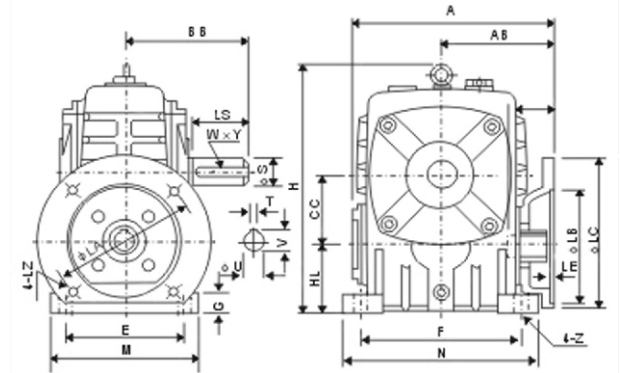
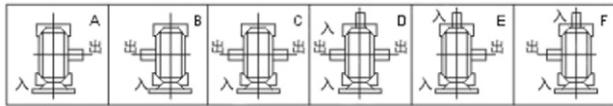


WPDA

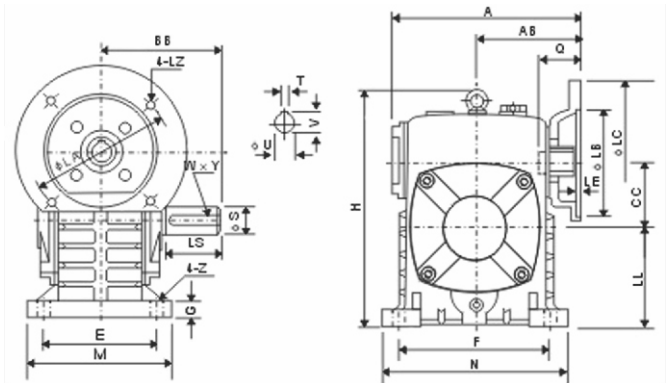


SHAFT DIRECTION

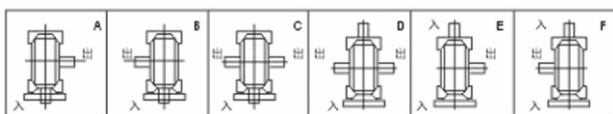


size	input (kW)	ratio	A	AB	BB	CC	H	HL	M	N	E	F	G	Z	flange				input shaft			output shaft			weight(kg)		
															LA	LB	LC	LE	LZ	Q	U	T x v	LS	S		W x Y	
50	0.18	1/10 1/15 1/20 1/25 1/30 1/40 1/50 1/60	151	83	97	50	176	50	120	140	95	110	15	12	115	95	140	4	M8	31	11	4 x 12.8	40	17	5 x 3	8	
60	0.37		167	91	112	60	204	60	130	150	105	120	20	12	130	110	160	4	M8	33	14	5 x 16.3	50	22	6 x 3.5	11	
70	0.37		200	109	131	70	236	70	150	190	115	150	20	15	130	110	160	4	M8	40	14	5 x 16.3	60	28	8 x 4	17	
	0.75		202	111																							M10
80	0.75		1/10	225	125	142	80	268	80	170	220	135	180	20	15	165	130	200	4.5	M10	48	19	6 x 21.8	65	32	10 x 5	22
	1.5																										
100	1.5		1/15	280	148	169	100	336	100	190	270	155	220	25	15	165	130	200	4.5	M10	52	24	8 x 27.3	75	38	10 x 5	38
120	2.2		1/20	333	181	190	120	430	120	230	320	180	260	30	18	215	180	250	5	M12	63	28	8 x 31.3	85	45	14 x 5.5	64
	3.0																										
135	3.0		1/25	375	202	210	135	480	135	250	350	200	290	30	18	215	180	250	5	M12	63	28	8 x 31.3	95	55	16 x 6	85
	4.0																										
147	3.0		1/40	380	204	212	147	501	123	250	350	200	280	32	18	215	180	250	5	M12	63	28	8 x 31.3	95	55	16 x 6	96
	4.0																										
155	5.5	1/50	448	247	252	155	531	135	275	390	220	320	35	21	265	230	300	5	M12	83	38	10 x 41.3	110	60	18 x 7	118	
175	5.5	1/60	481	262	262	175	600	160	310	430	250	350	40	21	265	230	300	5	M12	83	38	10 x 41.3	110	65	18 x 7	165	
	7.5																										
200	11.0	543	285	305	200	666	175	360	480	290	390	40	24	300	250	350	6	M16	114	42	12 x 45.3	125	70	20 x 7.5	236		
250	11.0	1/60	615	330	360	250	800	200	460	560	380	480	45	28	300	250	350	6	M16	114	42	12 x 45.3	155	90	25 x 9	396	
	15.0																										

WPDS



SHAFT DIRECTION



size	ratio	input (kW)	A	AB	BB	CC	H	LL	M	N	E	F	G	Z	flange				input shaft			output shaft			weight(kg)		
															LA	LB	LC	LE	LZ	Q	U	T x v	LS	S		W x Y	
50	0.18	1/10 1/15 1/20 1/25 1/30 1/40 1/50 1/60	151	83	97	50	176	80	120	140	95	110	15	12	115	95	140	4	M8	31	11	4 x 12.8	40	17	5 x 3	8	
60	0.37		167	91	112	60	202	90	130	150	105	120	20	12	130	110	160	4	M8	33	14	5 x 16.3	50	22	6 x 3.2	11	
70	0.37		200	109	131	70	238	105	150	190	115	150	20	15	130	110	160	4	M8	40	14	5 x 16.3	60	28	8 x 4	17	
	0.75		202	111																							M10
80	0.75		1/10	225	125	142	80	273	120	170	220	135	180	20	15	165	130	200	4.5	M10	48	19	6 x 21.8	65	32	10 x 5	22
	1.5																										
100	1.5		1/15	280	148	169	100	334	150	190	270	155	220	25	15	165	130	200	4.5	M10	52	24	8 x 27.3	75	38	10 x 5	38
120	2.2		1/20	333	181	190	120	423	180	230	320	180	260	30	18	215	180	250	5	M12	63	28	8 x 31.3	85	45	14 x 5.5	64
	3.0																										
135	3.0		1/25	375	202	210	135	482	215	250	350	200	290	30	18	215	180	250	5	M12	63	28	8 x 31.3	95	55	16 x 6	85
	4.0																										
147	3.0		1/40	380	204	212	147	495	203	250	350	200	280	32	18	215	180	250	5	M12	63	28	8 x 31.3	95	55	16 x 6	96
	4.0																										
155	5.5	1/50	448	247	252	155	541	235	275	390	220	320	35	21	265	230	300	5	M12	83	38	10 x 41.3	110	60	18 x 7	118	
175	5.5	1/60	481	262	262	175	600	260	310	430	250	350	40	21	265	230	300	5	M12	83	38	10 x 41.3	110	65	18 x 7	165	
	7.5																										
200	11.0	543	285	305	200	677	290	360	480	290	390	40	24	300	250	350	6	M16	114	42	12 x 45.3	125	70	20 x 7.5	236		
250	11.0	1/60	615	330	360	250	824	350	460	560	380	480	45	28	300	250	350	6	M16	114	42	12 x 45.3	155	90	25 x 9	396	
	15.0																										